

CRITICAL: MEASURE FROM TOP OF FINISHED FLOOR
OR FLOOR COVERING TO TOP OF TRACK

MEASURE HEIGHT AT SEVERAL
PLACES ACROSS THE OPENING

ALL DIMENSIONS IN PARENTHESES ARE MILLIMETERS.

14Ft 4 3/4 W X 7Ft 2 7/8 H, 4100V Sound Door 6" Panel
FSTC 41
Vinyl, Color to be determined, Single Ended,
Ball Bearing Wheels
Brushed Chrome Hardware, Cylinder Thumb Turn 2 Sided,
Connector Color TBD
No Floor Clearance, Serrated Sweep Strip, Closet Back
Left Stack, Standard White 4100 Track
Measurement: Opening Height Measurement

PLEASE SPECIFY FINAL COLOR
SELECTION

PANEL COLOR: _____

PANEL CONNECTOR: _____

HARDWARE: _____

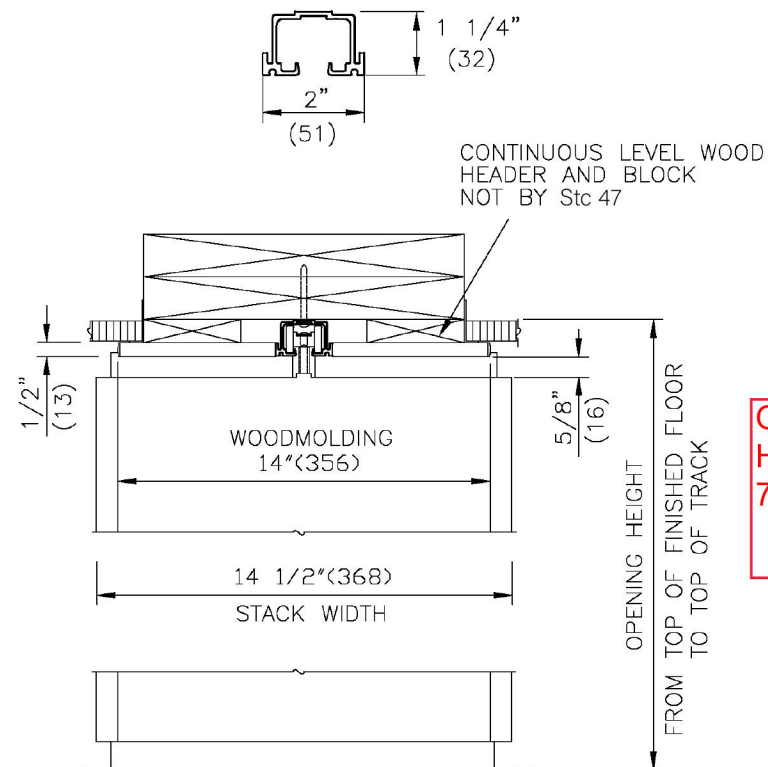


NOTES:

- Headers prepared by others to carry concentrated live load of partition(s) across entire opening.
- See specifications for lbs. per sq. ft. Headers must be level. Sway bracing, if required, by others.
- At poured concrete floors, place screeds to hold variation to no more than 1/4" (6), plus or minus, in 10'-0" (3048), non-accumulative, 16" (406) either side of center line of track.
- All grounds for jamps to be plumb to 1/4" (6), plus or minus, from finished floor to top of track.
- All structural requirements and trim, except jamb mould or ceilingguard by others.

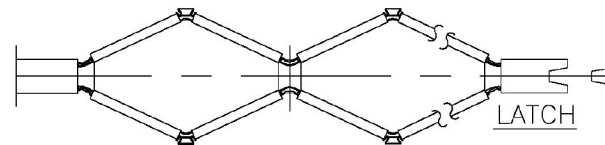
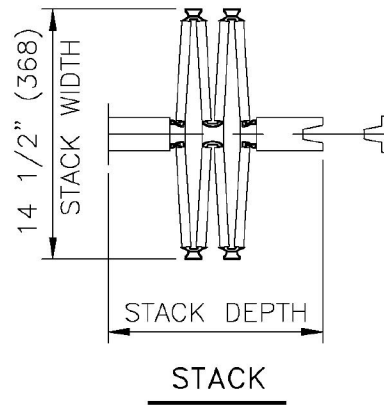
SURFACE TRACK WITH WOOD MOLDING
BY ANC 47

NOTE: # 14 X 2" (51) S.M. TRACK SCREWS



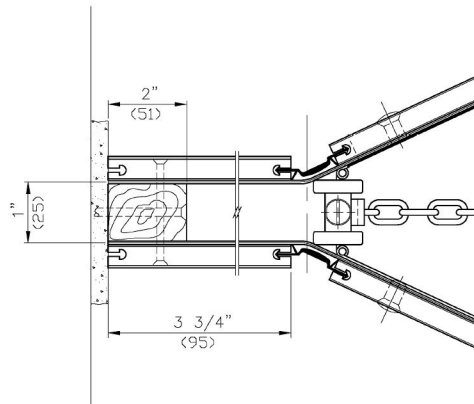
Opening
Height
7'-2 7/8"

Single Fixed (Left Hand)–Jamb Partition

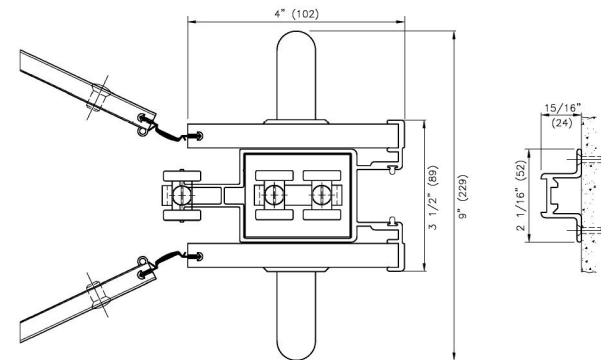


Opening Width
 $14'-4\frac{3}{4}"$

POST MOUNT
ANC 47



LEAD POST/JAMB MOLDING
ANC 47



**SOUNDPROOF
ACCORDION
DOORS**