

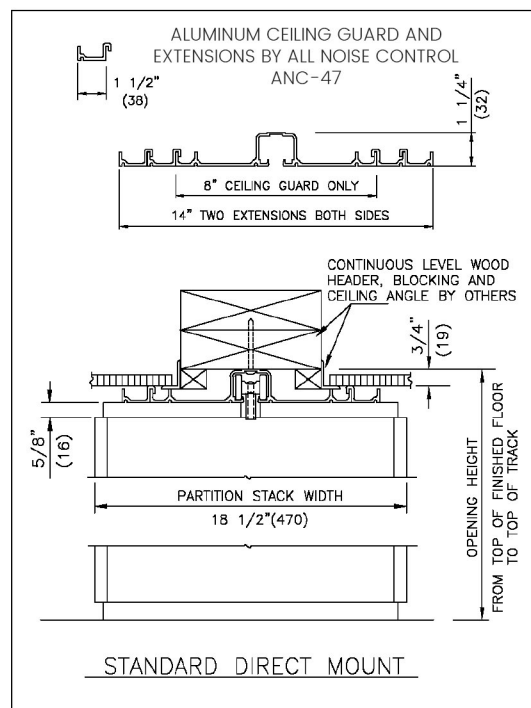
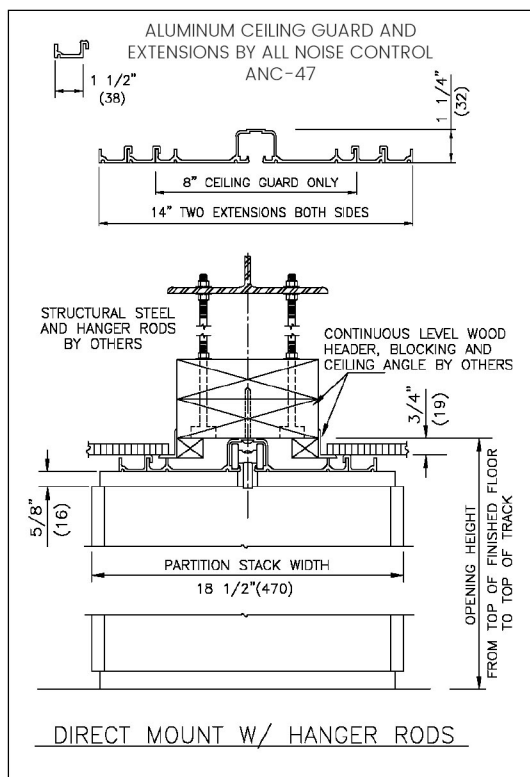
CRITICAL: MEASURE FROM TOP OF FINISHED FLOOR
OR FLOOR COVERING TO TOP OF TRACK

MEASURE HEIGHT AT SEVERAL
PLACES ACROSS THE OPENING

ALL DIMENSIONS IN PARENTHESES ARE MILLIMETERS.

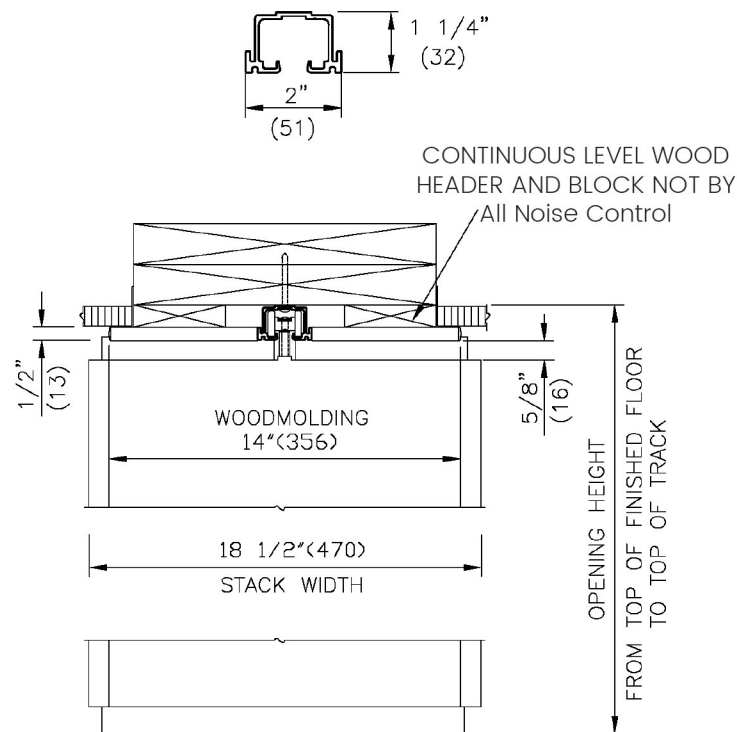
NOTES:

- Headers prepared by others to carry concentrated live load of partition(s) across entire opening. See specifications for lbs. per sq. ft. Headers must be level. Sway bracing, if required, by others.
- At poured concrete floors, place screeds to hold variation to no more than $1/4"$ (6), plus or minus, in 10'-0" (3048), non-accumulative, 16" (408) either side of center line of track.
- All grounds for jamps to be plumb to $1/4"$ (6), plus or minus, from finished floor to top of track.
- All structural requirements and trim, except jamb mould or ceilingguard by others.

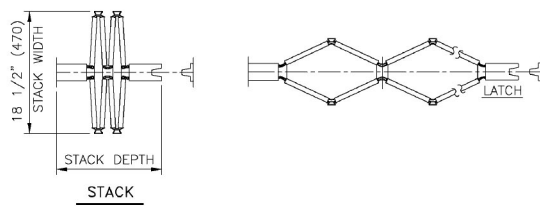


SURFACE TRACK WITH WOOD MOLDING BY ALL NOISE CONTROL ANC-47

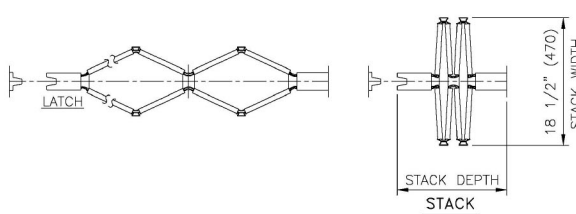
NOTE: # 14 X 2" (51) S.M. TRACK SCREWS



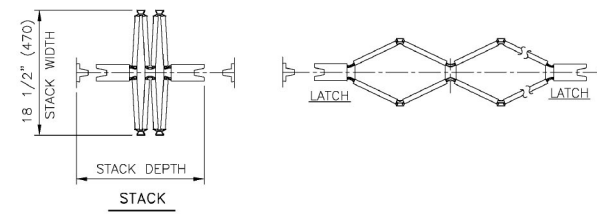
Single Fixed (Left Hand)-Jamb Partition



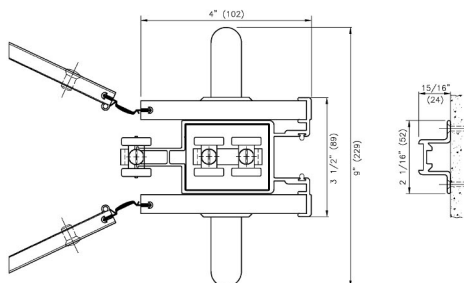
Single Fixed (Right Hand)-Jamb Partition



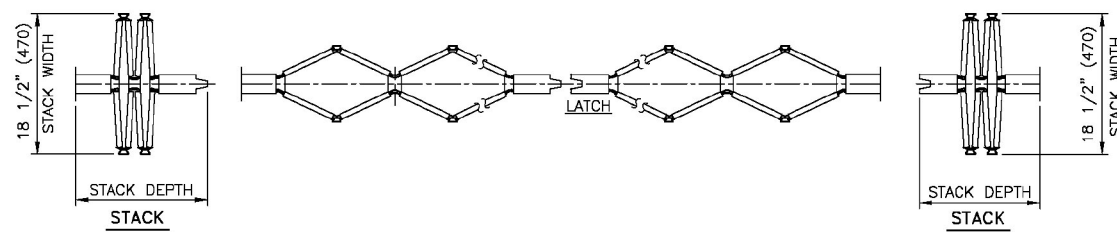
Double-End Post Partition



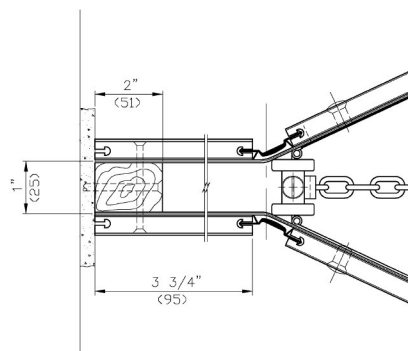
LEAD POST/JAMB MOLDING
All NOISE CONTROL ANC 47



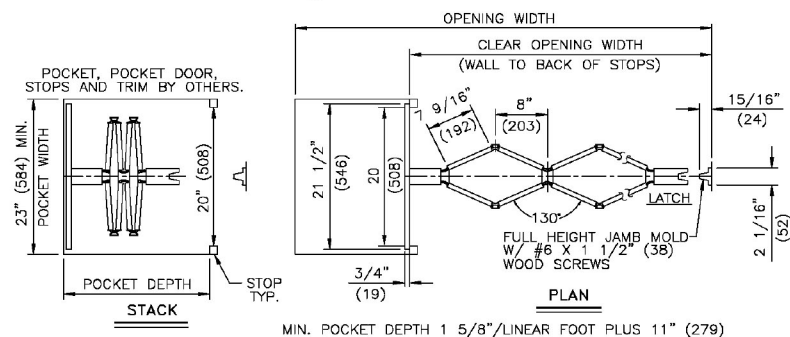
Joining Pair Of Fixed-Jamb Partitions



LEAD POST/JAMB MOLDING
All NOISE CONTROL ANC 47



Sliding Jamb Partition-Pocket Installation



Complete Product Specifications: visit www.allnoisecontrol.com

Panels: 8" wide by ½" thick medium density fiberboard with a routed edge for vinyl hinging.

Panel Connectors: Flexible vinyl, color-coordinated to panel selection, inserted and attached into routed edges

Track: 2" x 1-1/4" aluminum, pre-punched for screw fasteners for surface mounting

Lead Posts: Extruded aluminum, 3-7/16" x 4-7/8" cross-section, with jamb molding. Color-coordinated to panel connectors.

Hinge assembly: 16 gauge steel, pantograph action for dual-wall door assembly

All NOISE CONTROL: The dual-wall door with internal acoustic material, flexible vinyl sweep strips mounted on top and bottom of the cracks. Wall molding is placed strategically around both sides for an elegant look that creates a wide surface area.

Acoustical liner: Applied to inside faces of both walls.

Wheels: Nylon-tired steel ball-bearing wheels; 4 wheeled carriers on each volute and lead post.

Width: Contact Customer Service for connector options.

Height: Vinyl-Laminate up to 12'.

Stack Width: 18 ½"

Jamb Molding: 2-1/8" wide by 15/16" deep aluminum.

Handles: Metal Latch

Latch: Dead latch with thumb turn two-sides/one side and a range of key lock options available